



The first name in authentic Bali batik.

Mirah

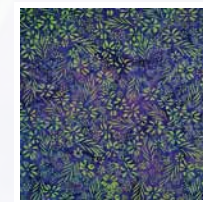
Sunrise to Sunset

FREE PROJECT
BatikByMirah.com

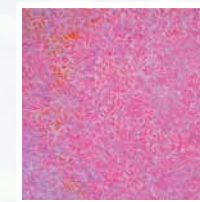


Sunrise to Sunset

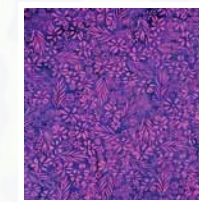
Sunset Bloom Quilt 69" x 87"



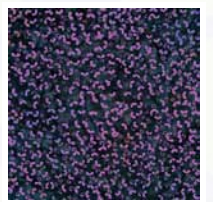
SM-1 / 3254
Chemistry



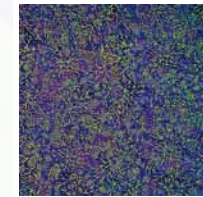
SM-1 / 3252
Grey Pink



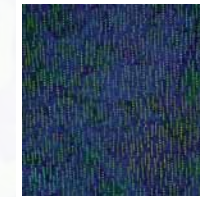
SM-1 / 3253
Steel Grey



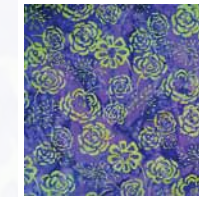
SM-2 / 3251
Midnight



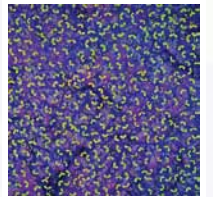
SM-4 / 3254
Chemistry



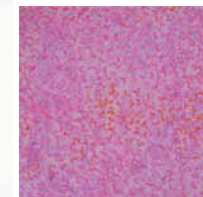
SM-5 / 6296
Dark Skyblue



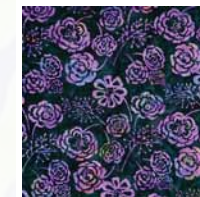
SM-3 / 3254
Chemistry



SM-2 / 3254
Chemistry



SM-2 / 3252
Grey Pink



SM-3 / 3251
Midnight



SM-10 / 3254
Chemistry



SM-11 / 3254
Chemistry

FABRIC

| FABRIC | 1 QUILT | 12 KITS | 18 KITS | 24 KITS |
|----------------------------|-------------|---------|---------|---------|
| A | 1/4 yard | 1 bolt | 1 bolt | 1 bolt |
| B | 2/3 yard | 1 bolt | 1 bolt | 2 bolts |
| C | 3/4 yard | 1 bolt | 1 bolt | 2 bolts |
| D | 1/4 yard | 1 bolt | 1 bolt | 1 bolt |
| E | 1/4 yard | 1 bolt | 1 bolt | 1 bolt |
| F | 1/2 yard | 1 bolt | 1 bolt | 1 bolt |
| G | 7/8 yard | 1 bolt | 2 bolts | 2 bolts |
| H | 1/4 yard | 1 bolt | 1 bolt | 1 bolt |
| I | 1/2 yard | 1 bolt | 1 bolt | 1 bolt |
| J | 1 1/3 yard | 2 bolts | 2 bolts | 3 bolts |
| K <i>Includes Binding</i> | 2/3 yard | 1 bolt | 1 bolt | 2 bolts |
| L | 1 yard | 1 bolt | 2 bolts | 2 bolts |
| M* | 1 2/3 yards | 2 bolts | 3 bolts | 4 bolts |
| N <i>Suggested Backing</i> | 5 1/2 yards | 5 bolts | 7 bolts | 9 bolts |



MS-10 / 416
Cotton Candy



SM-3 / 3252
Grey Pink

Finished quilt sizes are approximate.

Kit requirements based on a minimum of 15 yards per bolt.

**Princess Palette only available in 10 yard pieces*

Sunset Bloom Quilt
69" x 87"

Quilt Designs by Heidi Pridemore



In the USA exclusively for
PARKSIDE FABRICS (USA), INC.
TOLL FREE
1.855.531.9921 parksidefabrics.com



In Canada exclusively for
CADOR TEXTILE IMPORTING LTD.
TOLL FREE
1.800.628.7418 cadortextiles.com



The first name in authentic Bali batik.

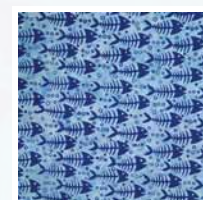
Mirah Sunrise to Sunset

FREE PROJECT
BatikByMirah.com



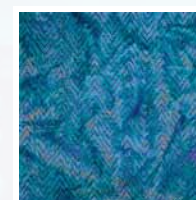
Sunrise to Sunset

Ocean Tale Quilt 69" x 87"



A

OC-6 / 9049
Cloud Grey



B

OC-12 / 1354
Rowing Teal



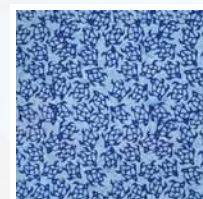
C

OC-7 / 1355
Charcoal



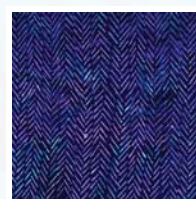
D

OC-3 / 1353
Famous Blue



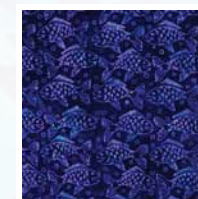
E

OC-7 / 9049
Cloud Grey



F

OC-4 / 1353
Famous Blue



G

OC-1 / 1353
Famous Blue



H

OC-2 / 1353
Famous Blue



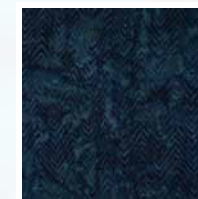
I

OC-10 / 9049
Cloud Grey



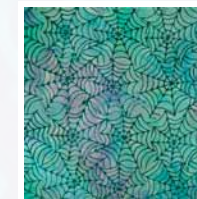
J

OC-5 / 9049
Cloud Grey



K

OC-12 / 1355
Charcoal



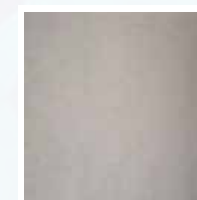
L

OC-9 / 9050
Seafoam

FABRIC

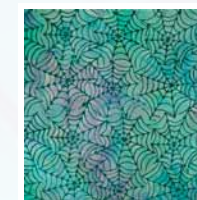
| FABRIC | 1 QUILT | 12 KITS | 18 KITS | 24 KITS |
|---------------------|-------------|---------|---------|---------|
| A | 1/4 yard | 1 bolt | 1 bolt | 1 bolt |
| B | 2/3 yard | 1 bolt | 1 bolt | 2 bolts |
| C | 3/4 yard | 1 bolt | 1 bolt | 2 bolts |
| D | 1/4 yard | 1 bolt | 1 bolt | 1 bolt |
| E | 1/4 yard | 1 bolt | 1 bolt | 1 bolt |
| F | 1/2 yard | 1 bolt | 1 bolt | 1 bolt |
| G | 7/8 yard | 1 bolt | 2 bolts | 2 bolts |
| H | 1/4 yard | 1 bolt | 1 bolt | 1 bolt |
| I | 1/2 yard | 1 bolt | 1 bolt | 1 bolt |
| J | 1 1/3 yard | 2 bolts | 2 bolts | 3 bolts |
| K Includes Binding | 2/3 yard | 1 bolt | 1 bolt | 2 bolts |
| L | 1 yard | 1 bolt | 2 bolts | 2 bolts |
| M* | 1 2/3 yards | 2 bolts | 3 bolts | 4 bolts |
| N Suggested Backing | 5 1/2 yards | 5 bolts | 7 bolts | 9 bolts |

Finished quilt sizes are approximate.



M

CO-5 / 507
Englishrose



N

OC-9 / 9050
Seafoam

Kit requirements based on a minimum of 15 yards per bolt.
*Princess Palette only available in 10 yard pieces

Ocean Tale Quilt
69" x 87"

Quilt Designs by Heidi Pridemore



In the USA exclusively for
PARKSIDE FABRICS (USA), INC.
TOLL FREE
1.855.531.9921 parksidefabrics.com



In Canada exclusively for
CADOR TEXTILE IMPORTING LTD.
TOLL FREE
1.800.628.7418 cadortextiles.com